

ART ARCHI Hiroshima 2013  
Special Exhibition  
SITE: Places of Memories, Spaces with Potential

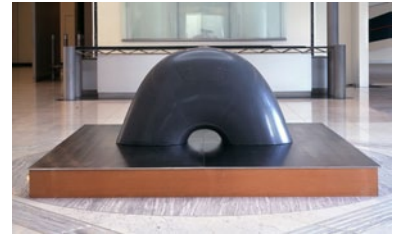
One of the works by Isamu Noguchi – who had close ties to Hiroshima – is a 1952 plan for a cenotaph for the atomic bomb victims. Kenzo Tange, architect who designed Peace Center, requested him to produce a cenotaph for the Peace Memorial Park but he did not have the opportunity to realize it. This visionary work will be foremost among a series of artistic representations triggered by memory of sites and works visualizing stories associated with sites, which we will be presenting through the endeavors mainly of contemporary artists.

*SITE: Places of Memories, Spaces with Potential* is part of *Art Arch Hiroshima 2013*, the first art program to be organized jointly by the Hiroshima City Museum of Contemporary Art, the Hiroshima Prefectural Art Museum and the Hiroshima Museum of Art.

Referencing the Noguchi's work as a departure point, this exhibition attempts to explore the “site-associated” endeavors of artists from Noguchi to those working in the genre today. How do artists produce or visualize art that is inspired by the memory of a site (place), art that has a deep connection to the lives of people or the history of a specific place and stories that carry with them a place? And do these artistic practices offer us a way of facing the future? In this exhibition, we place a special emphasis on works and projects with a wide range of viewpoints that make use of a light, flexible, and, as it were, “unmonumental” approach. This includes, for example, three-dimensional works that make use of everyday objects and videos that deal with familiar landscapes that run counter to the one-sided resolve of a monument. It is our hope that this exhibition, which considers the relationship between memory and place, including memories of pain and sacrifice, and nostalgic feelings for one's hometown, will provide visitors with an opportunity to contemplate peace in Hiroshima, a city which is indelibly linked to memories of wartime destruction and loss.

**ART ARCH HIROSHIMA 2013**

*SITE: Places of Memories, Spaces with Potential*, is held at the Hiroshima City Museum of Contemporary Art as part of the partnership dubbed *Art Arch Hiroshima 2013*, the first collaborative project to be undertaken by Hiroshima's three art museums: the Hiroshima Museum of Art, Hiroshima Prefectural Art Museum, and Hiroshima City Museum of Contemporary Art. Based on a common theme of striving for peace through art, the event sets out to transmit a message from the city via art by simultaneously presenting distinctive exhibitions that emphasize the special characteristics of each participating museum. At the heart of these three exhibitions is Isamu Noguchi.



Isamu Noguchi  
*Model for Memorial to the Dead of Hiroshima (1/5)*, 1952 (1991)  
©The Isamu Noguchi Foundation and Garden Museum, New York



Tadashi Kawamata  
*Prefabrication Hiroshima*, 1994/2013  
Photo: Kunio Oshima



Michael Rakowitz  
*The Invisible Enemy Should Not Exist (Recovered, Missing, Stolen Series)*, 2007-2013  
Courtesy of Lombard Freid Gallery



Toru Kuwakubo  
*Study of mom*, 2011

## ARTIST

Francis Alÿs, Tadashi Kawamata, Yuki Kimura, Toru Kuwakubo, Tonico Lemos Auad, Gordon Matta-Clark, Isamu Noguchi, Michael Rakowitz, Yukihiro Taguchi, Yuken Teruya, Xijing Men (Chen Shaoxiong, Gimhongsok, Tsuyoshi Ozawa)

- Duration: Saturday, July 20- Monday, October 14, 2013
- Opening hours: 10:00-17:00 (Last Admission 16:30)
- Closed: Mondays (Except September 16, 23 and October 14), September 17, 24
- Admission charges: Adults 800 (600) yen, College and High School Students, Senior[65 years old and over] 400 (300) yen  
\*Figures in brackets ( ) are the charges for advance-purchase and groups of 20 or more persons.
- Organizers: Project to Energize Hiroshima Prefecture Art Museums, Executive Committee (Hiroshima Prefectural Art Museum, Hiroshima Museum of Art, Hiroshima City Museum of Contemporary Art, Tourism Promotion Office of the Hiroshima Prefectural Government, Hiroshima Cultural Promotion Foundation, Setra Hiroshima)The Chugoku Shimbun
- Under the auspice of: NHK Hiroshima Broadcasting Station, RCC Broadcasting, Hiroshima Telecasting, TSS-TV, Hiroshima FM Broad Casting Co., Ltd., FM Chupea 76.6MHz, FM Fukuyama Broadcasting, Onomichi FM Broad Casting Co., Ltd., FM Hatsukaichi 76.1MHz
- With Support from: The Hiroshimaken Credit Cooperative



Yuki Kimura  
*KATSURA*, 2012  
Courtesy of Taka Ishii Gallery



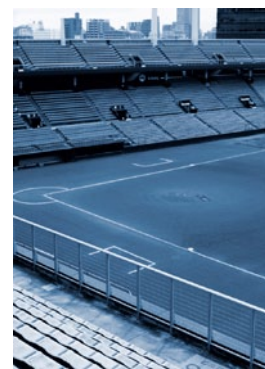
Tonico Lemos Auad  
*Seven Seas/ Night*, 2007-2009

## Collection Exhibition 2013-2 *Site=Hiroshima*

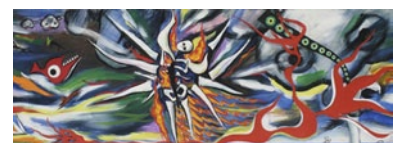
In the collection galleries, visitors will find works closely relating to Hiroshima chosen for exhibition from among the very best of the museum's commissioned and collected works that embrace the memory of Hiroshima and, together with present-day artists, contemplate Hiroshima through art. Various other "site-related" artworks will be presented throughout the rest of the museum.

Moreover, in the last section of the exhibition, there is a special display (the only part that is free of charge) of Taro Okamoto's original drawings for the mural *Myth of Tomorrow*. In this work, the artist expresses people's strength in confronting the threat of atomic and hydrogen bombs.

- Duration: Saturday Jul. 6- Monday Nov. 4, 2013
- Opening hours: 10:00-17:00 (Last Admission 16:30)
- Closed: Monday (unless Monday is a national holiday, in which case the museum will be closed on next ordinary day.)
- Admission charges: Adults 360(280) yen, College Students 270(210) yen, High School Students and Senior[65 years old and over] 170(130) yen  
\*Figures in brackets ( ) are the charges for groups of 30 or more persons  
\*Nov.3(Culture Day): Free admission



Tsuyoshi Ozawa  
Jizoing: Former Hiroshima Municipal Baseball Stadium [Hiroshima], 2009



Taro Okamoto  
*Myth of Tomorrow*, 1967