

## Collection Exhibition 2011-II To Build, To Depart, Hiroshima Imagined

### The atomic bomb, recovery

#### – expression associated with the place called Hiroshima

Isamu Noguchi, sculptor of mixed Japanese-American parentage whose career straddled both countries, designed the handrails on the Peace Bridge and West Peace Bridge near Hiroshima's Peace Memorial Park, naming them respectively "Tsukuru (To Build)" and "Yuku (To Depart)". These names also carry connotations of "creating" and "passing", as well as "living" and "dying". Hiroshima's status as target of the first atomic bombing in human history and its subsequent recovery represent not only the tragedy that occurred here, but the very threat that continues to confront humanity in the nuclear age. The city has also taken on a symbolic status as proof of the power of human endeavor to recover from the bomb's catastrophic destructive force. To date numerous artists have produced works associated with Hiroshima. In their offerings can be found expression that goes beyond the devastation wrought by the A-bomb as an individual phenomenon and the associated sorrow and anger to question fundamental aspects of the human condition. From this viewpoint, Hiroshima offers imaginative clues that compel us to turn our attention to the pain of those on the other side of physical and cultural divides, and connect to constantly changing present-day issues. For the final section a special free-to-view corner has been set up to display – alongside other works by Taro Okamoto – the original of his mural *Myth of Tomorrow* portraying the threat of atomic and hydrogen bomb technology and the courage of people standing up to it.

#### Artist

Iri Maruki, Toshi Maruki, Nobuyoshi Araki, Kojin Toneyama, Seishi Ozaku, Tadayoshi Irino, Kakuzo Inoue, Oscar Oiwa, Sadamasa Motonaga, Takeshi Tsutitani, Montien Boonma, Masaaki Nishi, Tetsumi Kudo, Masuo Ikeda, Giju Saito, Ryoji Koie, Henry Moore, Keith Haring, Isamu Noguchi, Tadanori Yokoo, Tsuyoshi Ozawa, Tomoko Yoneda, Cai Guo-Qiang, Gunter Uecker, Kyoichi Tsuzuki, Taro Okamoto

- Duration: Saturday Jul 2- Sunday Nov 6, 2011
- Opening hours: 10:00-17:00 (Last Admission 16:30) \*Open until 19:00 from Nov. 3
- Closed: Monday (unless Monday is a national holiday, in which case the museum will be closed on next ordinary day.)
- Admission charges: Adults 360(280) yen, College Students 270(210) yen, High School Students 170(130) yen \*Figures in brackets ( ) are the charges for groups of 30 or more persons.



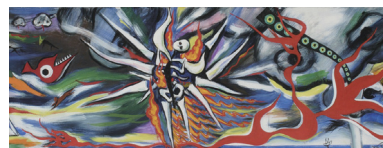
Isamu Noguchi  
*Model for Memorial to the Dead of Hiroshima(1/5)*  
1952/91



Nobuyoshi Araki  
*FLOWERS 2 HIROSHIMA* 2009



Cai Guo-Qiang  
*The Century with Mushroom Clouds: Project for the 20th Century (Nevada Nuclear Test Site)*  
1996/2008



Taro Okamoto  
*Myth of Tomorrow* 1967

#### Hiroshima City Museum of Contemporary Art

Curatorial Staff: Takeshi Matsuoka , PR Officers: Akiko Goto

1-1 Hijiyama Koen, Minami-ku, Hiroshima City, Hiroshima, 732-0815

Main Phone: 082-264-1121 Direct Phone: 082-264-1146 Fax: 082-264-1198

hcmca@hcmca.cf.city.hiroshima.jp

